



FLOURISHING
OCEANS

Program

MINDEROO EXMOUTH RESEARCH LABORATORY

National/Global

(Australia)



Vision

Minderoo Foundation Exmouth Research Lab provides Australian and international scientists with state-of-the-art facilities that enable high-quality, high-impact research for the development of innovative, long-term and scalable solutions to marine conservation.

The Lab is located between the World Heritage listed Ningaloo Reef and Exmouth Gulf, both critical Indian Ocean marine environments.

Managed by a team of Minderoo scientists and technicians, this important infrastructure supports world-class science that informs policy and drives positive change.



Identifying
heat-resilient
corals

Species
health and
monitoring



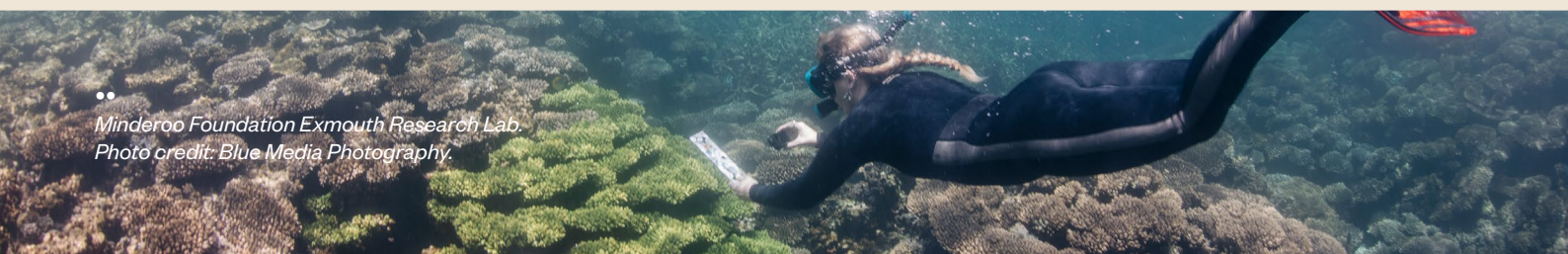
eDNA
detection
systems

Ocean
temperature
monitoring



Figure 1: High-impact research currently underway.

Minderoo Foundation Exmouth Research Lab.
Photo credit: Blue Media Photography.



Working with us

We are seeking project proposals for high-impact marine research. For more information scan the QR code.



•• Open laboratory area.

Photo credit: Blue Media Photography.

Facilities

The facilities at the lab include aquaria labs, molecular and wet lab, office space, vehicles, vessels and accommodation.

Aquaria Labs

Controlled Environment Room (CE room)

Flow-through temperature-controlled water configured into two separate rooms containing:

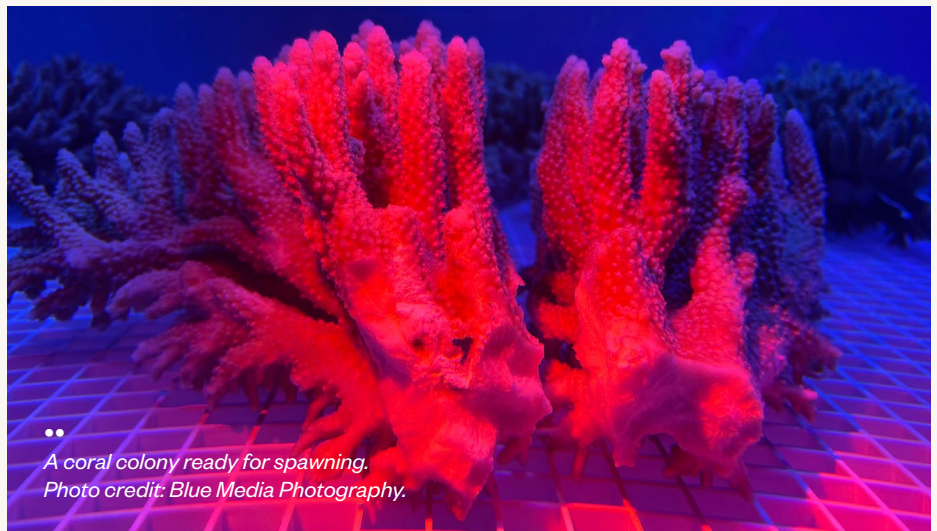
- multi-factor experimental room comprised of 27 x 50 L aquaria set up for a 3 x 3 x 3 design.
- larval rearing room comprising of 2 x 500 L and 4 x 80 L conical larval tanks with multiple seawater outlets.

Open Laboratory Area

The open laboratory area comprises two separate spaces that contain flow-through water to three 1200 L holding systems and eight benches that can each hold a mix of 50 L, 100 L and 200 L aquaria as well as 60 L aquaria.

Molecular Laboratory

Molecular Lab has equipment that allows for DNA extraction, quantification and amplification capabilities.



•• A coral colony ready for spawning.
Photo credit: Blue Media Photography.

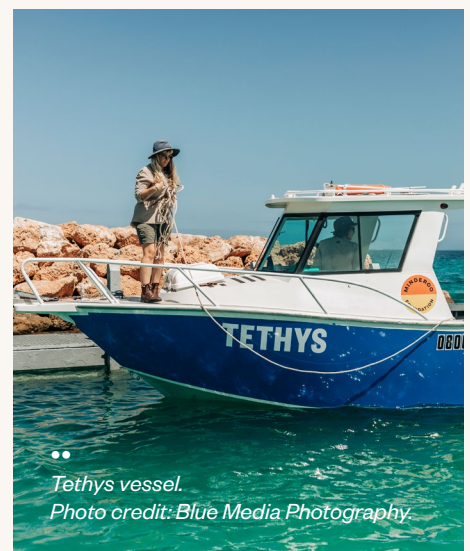
Vessels

Tethys

Tethys is a trailered 7 m plate aluminium vessel surveyed to 15 NM offshore with a five-person capacity. Equipped with a Yamaha 225 hp outboard motor, it has a travel range of approx. 100 NM.

Isurus

Isurus is surveyed to 30 NM offshore and has a six-person capacity. At 7.5 m length and 2.7 m beam it provides a greater deck space than Tethys. The vessel has a travel range nearing 200 NM, with dual 140 hp outboards.



•• Tethys vessel.
Photo credit: Blue Media Photography.