

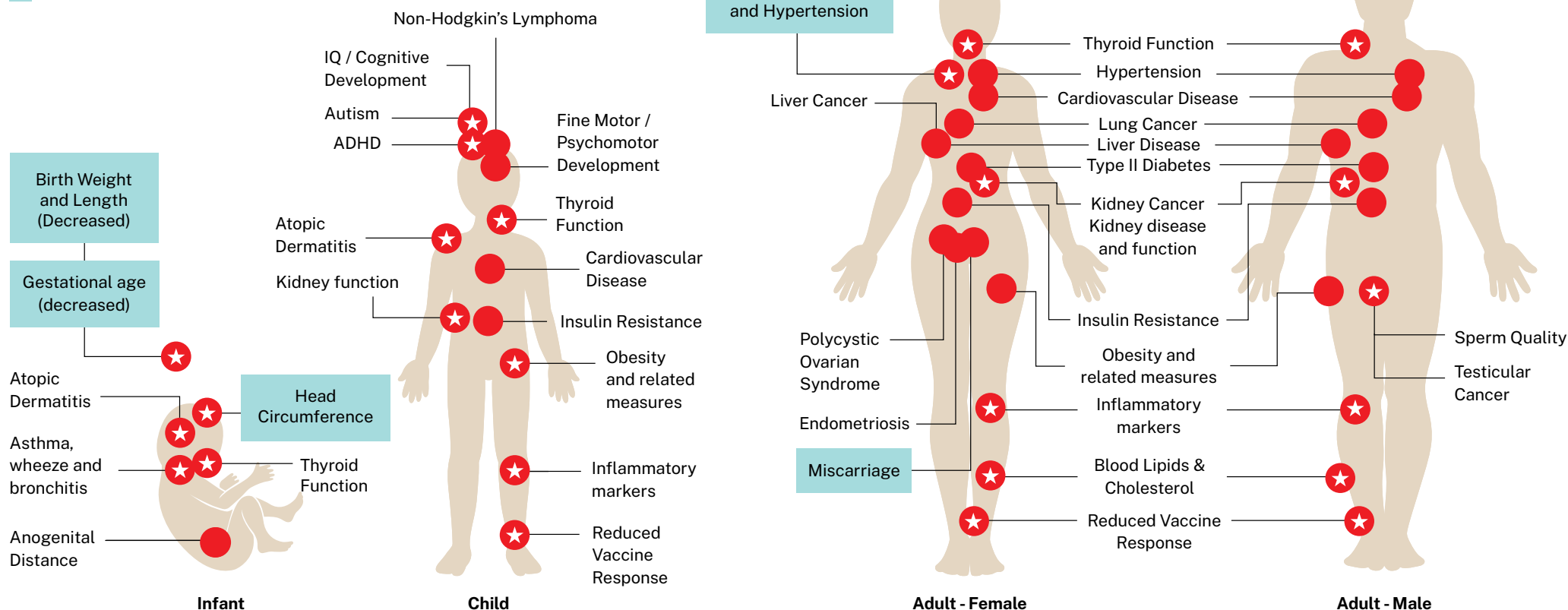
BPA, phthalates, PCBs, PBDEs and PFAS

Consistent and significant evidence that exposure to plastic chemicals increases risk of multiple health harms:

INCLUDES
UPDATED FINDINGS

★ New evidence of harm

■ Pregnancy and birth related harm



Sources:

Mulders Y., Cann, S., Carpenter, C., Chiles, T., Kabeya H., Lyons A., Mack, M., Sonn C., Symeonides, C., Thapa K., Dunlop S., Landrigan P. (2025) The Global Observatory on Planetary Health: PlasticHealthAware (Version 1.0). Boston College, Boston. <https://plastichealthaware.bc.edu/>

Geueke B, Groh KJ, Maffini MV, Martin OV, Boucher JM, Chiang YT, Gwosdz F, Jieh P, Kassotis CD, Lanska P, Myers JP, Odermatt A, Parkinson LV, Schreier VN, Srebny V, Zimmermann L, Scheringer M and Muncke J (2022) "Systematic Evidence on migrating and extractable Food Contact Chemicals: Most Chemicals detected in Food Contact Materials are not listed for Use" Critical Reviews in Food Science and Nutrition, DOI: 10.1080/10408398.2022.2067828

Food Packaging Forum Foundation (2022) "FCCmigex Database." <https://www.foodpackagingforum.org/fccmigex>